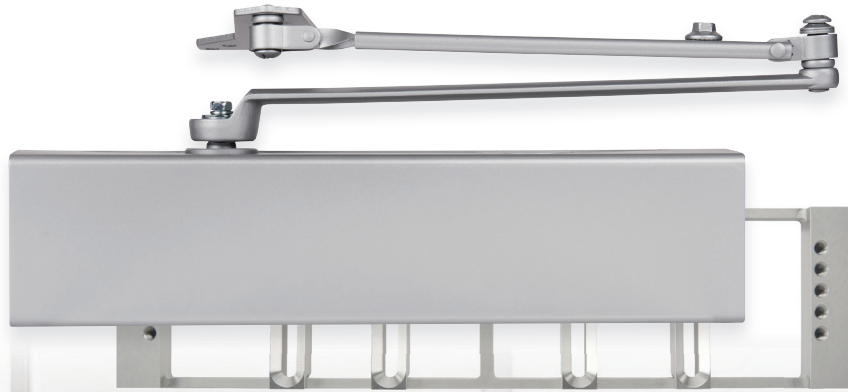




Heavy Duty All-In-One Door Closer

With FlexPlate



www.brinkscommercial.com | 866 LOCK-PRO (866 562-5776)



Background

Brinks Commercial's door closers are made to fit nearly any door ranging from light to heavy duty. We stand out from our competition with our Heavy-Duty All-In-One Door Closer and FlexPlate. This mounting plate is designed specifically for retrofit applications, allowing installers to easily replace an old or broken door closer without having to drill new holes in an expensive or fire rated door. The recently redesigned FlexPlate is lighter, stronger, and compatible with twice the amount of competitor hole patterns than the previous generation.

Why You Need a Door Closer

Security: Door closers keep doors closed and secured from traffic on both sides allowing for control of traffic in-and-out.

Door Control: Fine tune adjustability for speed and latching of a closing a door.

Code Requirements: Door closers are required in most commercial spaces in effort to contain the spread of fires and smoke.

Heating and Cooling Costs: A properly functioning door closer keeps doors closed which allows heat or cold air to stay in positively impacting a facilities energy efficiency.

Why The Brinks Commercial All-In-One Door Closer?

Designed for Retrofits: FlexPlate matches nearly all competitor mechanical closers found in the field.

Powerful: Adjustable sizing 1-6 covers a wide range of door widths and weights.

Easy Installation: Step-by-step instructions and templates allow for easy installation with basic hand tools.

Low Maintenance: Tested to exceed 1.5 million cycles allows for longevity without required servicing.

Widely Adjustable: Finely tune sweep speed, latching, and back-check.

Code Compliance: ANSI A156.4 Grade 1 rated, UL 10c/3-hour, ADA, Limited Lifetime Warranty.

Gen 2 vs. Gen 1



VS



Gen 2

Patent pending

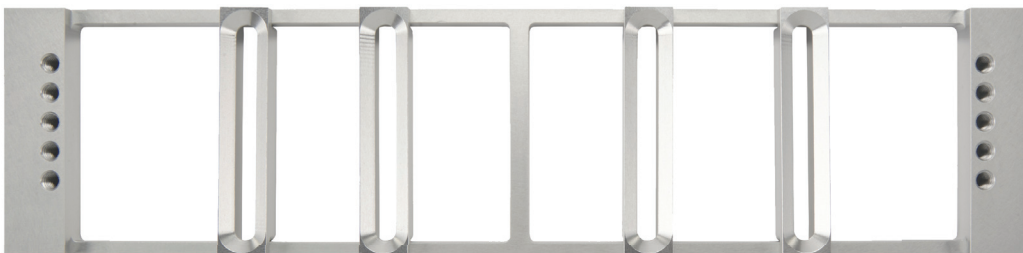
190% More Compatibility: Covers more than 80% of competitor closers in the market.

Greater Adjustability: Sliding shims allow for greater x-and-y axis adjustability.

Vertical Holes on Edges: Allow for greater compatibility in parallel and standard mount.

Higher Sustainability: Reduced weight and material.

User Friendly: One way plate orientation allows for easy placement and installation.



Gen 1

Retrofits Most Competitor Closers: Hole patterns match a variety of closers in market.

Limited Adjustability: Limited adjustability on x or y-axis.

Excessive Material: Solid steel design is heavy.

Requires Correct Orientation: Plate must be applied in specific orientation based on door and mounting style.



Compatibility

STANLEY Access Technologies

- D1650 Series
- D1651 Series

design hardware™

- 116 Series
- 316 Series
- 416 Series

ARROW LOCK & DOOR HARDWARE

ASSA ABLOY

- 900N Series
- 500N Series
- DC214 Series
- DC203 Series
- DC204 Series
- 5016N
- DC500

DELANEY™

- 4400 Series
- 6000 Series
- 8000 Series

SHIELD SECURITY.

- 801201
- 801202
- 801204
- 801205
- 801207
- 909166
- 909168
- 909169

CALIBRE DOOR CLOSERS a Company of Ingersoll Rand

- CA4000 Series
- CA5500 Series

DELTA

- DC7
- DC10
- DC40
- DC50
- DC90

GLOBAL DOOR CONTROLS

- TC400 Series
- TC500 Series
- TC201
- TC4300
- TC2201ADA
- TC2200
- TC600
- TC4361
- DC70
- DC90

PDQ

- 1100 Series
- 3100 Series
- 5301
- 5501
- 7101

SARGENT

ASSA ABLOY

- 281 Series
- 351 Series
- 1130 Series
- 1331 Series
- 1430/1431 Series

PREMIER LOCK

- DC31 Series
- DC41 Series
- DC51 Series

International® door closers inc

- 650/680 Series
- 750/780 Series
- 850/880 Series
- 5000/5050 Series
- 8050 Series
- 9000 Series
- 44CI Series
- 5000 Series
- 8051-TP

DEXTER COMMERCIAL HARDWARE

- DCH1000
- DCL2000
- DCM1000
- DCH4000

INDEPENDENCE

- 201 Series
- 611 Series

CRL

- PR40
- PR80
- PR90

Tell DOORS & HARDWARE

- 300 Series
- 500 Series
- 600 Series
- 800 Series
- 900 Series

BEST

dormakaba Group

- SL6000 Series
- HD7000 Series
- HD8000 Series
- HD7016
- HD8016
- SL6014
- EHD9000/EHD9016
- HF8056
- SL6036

Yale

- 150 Series
- 1400 Series
- 2300 Series
- 2500 Series
- 3100 Series
- 3300/3301 Series
- 3500 Series
- 5100 Series
- SC4400 Series
- SC400 Series
- 1101BF
- 1900
- 2701
- 51
- YDC201
- 5800
- 2721
- 2731
- 3521
- 3531
- 3581

L.I.F. INDUSTRIES, INC.

- Grade 3 MD
- Grade 2 HD

dormakaba

- 7300 Series
- 7400 Series
- 7414
- 7436
- 8616
- 8916
- 8956

LCN®

- 1000 Series
- 1260 Series
- 1460 Series
- 4040 Series
- 1250
- 1261
- 1450
- 4011
- 4021
- 4031
- 4041
- 4050
- 4111
- 4010
- 4020
- 4110

Corbin Russwin

ASSA ABLOY

- DC3000 Series
- DC6000 Series
- DC8000 Series
- DC3200
- DC3220
- DC3600
- DC3219
- DC5200
- DC6200
- DC6210
- DC8200
- DC8210

TRU DOOR™

- TDC 100
- TDC 300
- TDC 400

FALCON®

- SC60 Series
- SC70 Series
- SC80 Series

IR DOR-O-MATIC

- SC60 Series
- SC80 Series

CAL-ROYAL PRODUCTS, INC. U.S.A.

- 300 Series
- 441 Series
- 700 Series
- 300PBF
- 500PBF
- N900PBF
- 800

HAGER COMPANIES

- 5100 Series
- 5200 Series
- 5300 Series

NORTON RIXSON

ASSA ABLOY

- 1600/1601 Series
- 7500/7700 Series
- 8100/8300/8500 Series
- 9300/9500 Series
- 410
- 210
- 1700
- 78BF

TownSteel

- TDC-70
- TDC-54
- TDC-85
- TDC-40

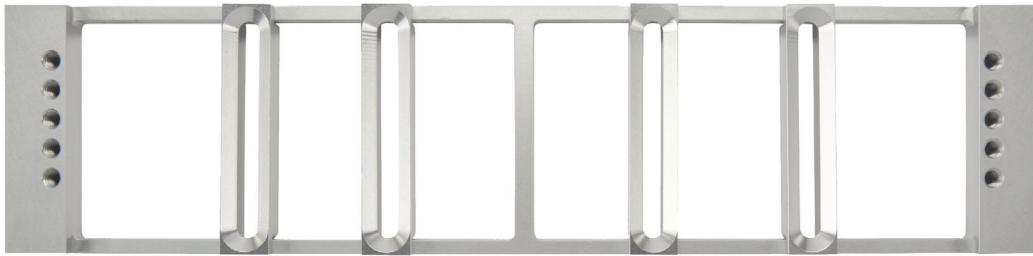
Doormerica

- DC70
- DC851
- DC40

RYOBI®

- 1650 Series
- 3500 Series

Replace Nearly Any Closer with The New and Improved FlexPlate



Match Your Existing Hole Pattern With The FlexPlate

- **Skip tracking down** a hard to get or unknown brand door closer
- **No drilling** new holes in an expensive or fire rated door
- **Top shelf quality** and features at **competitive prices**



FlexPlate

How to Use the FlexPlate

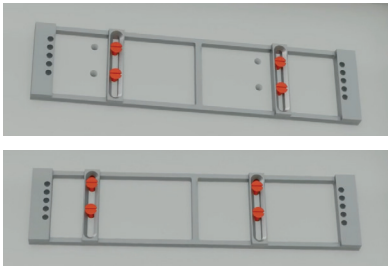
Step 1.

Remove old closer from door and clean the door surface if needed.



Step 2.

Attach the plate and sliders onto the door and screw them into the existing holes loosely.



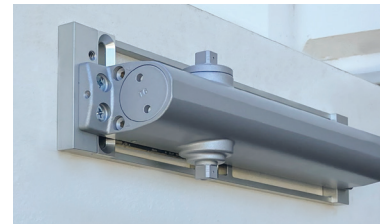
Step 3.

Slide the plate to match the ideal mounting points as noted in the instructions, then tighten the slider screws to secure the plate.



Step 4.

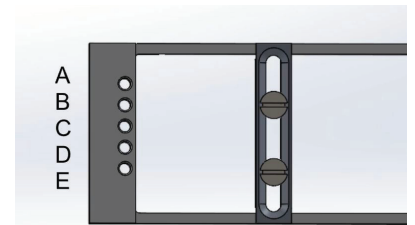
Attach closer body to the FlexPlate using the five threaded holes along the edges of the plate.



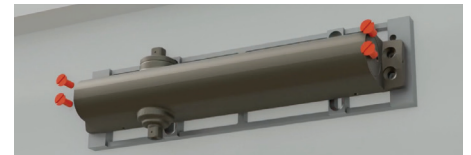
Pair A-C - So that the closer sits flush to the plastic cover

Pair B-D - Standard Mount




Pair C-E - Parallel Mount



When the closer is attached to the plate, the upper mounting hole on the closer body should align with the measurements from the top jamb and door hinge as noted in the instructions.

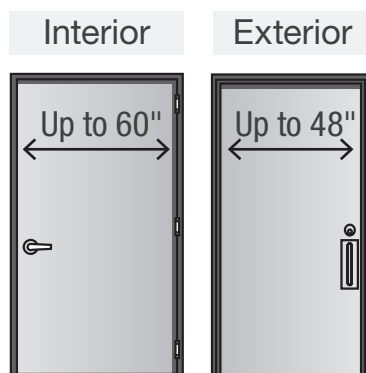


How Does the All-In-One Closer Stack Up?

Brand	BC4061	Tell 800	LCN 4041	LCN 1460 Series	Norton 8000 Series	Corbin DC3000 Series
Unique Hole Pattern	Yes	Yes	Yes	Yes	Yes	Yes
	✓	✓	✓	✓	✓	✓
	✓	✓	✓	✓	✓	✓
	✓	✓	✓	✓	✓	✓
For Exterior & Interior Doors	✓	✓	✓	✓	✓	✓
Adjustable spring tension from a Size 1 to Size 6	✓	✓	✓	✓	✓	✓
FlexPlate Included	✓	X	X	X	X	X
Average Retail	\$119	\$120	\$340	\$290	\$190	\$250

Key Features of the All-In-One Closer

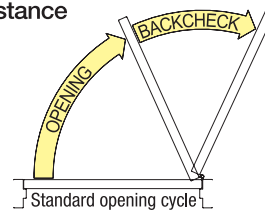
Compatible Door Widths



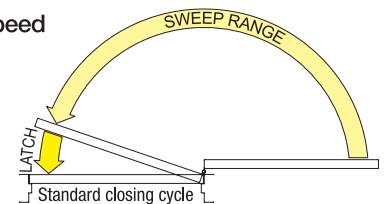
Sizing and Adjustability

- Adjustable sizing 1-6

Resistance

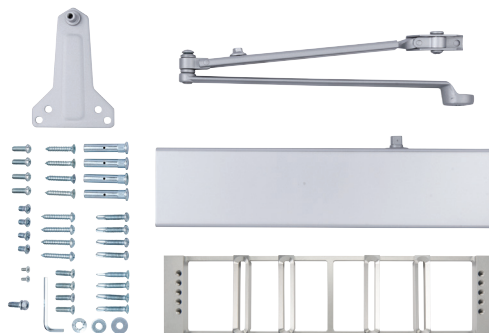


Speed



Included Contents

- Closer body
- Plastic cover
- FlexPlate
- Closer arm
- Mounting hardware
- Instructions



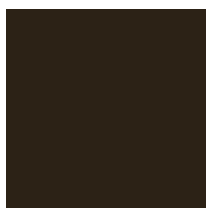
Finish Options



Aluminum



Matt Black



Bronze

Applications



Multifamily



Office



Government



Medical



Education



Hospitality



Churches



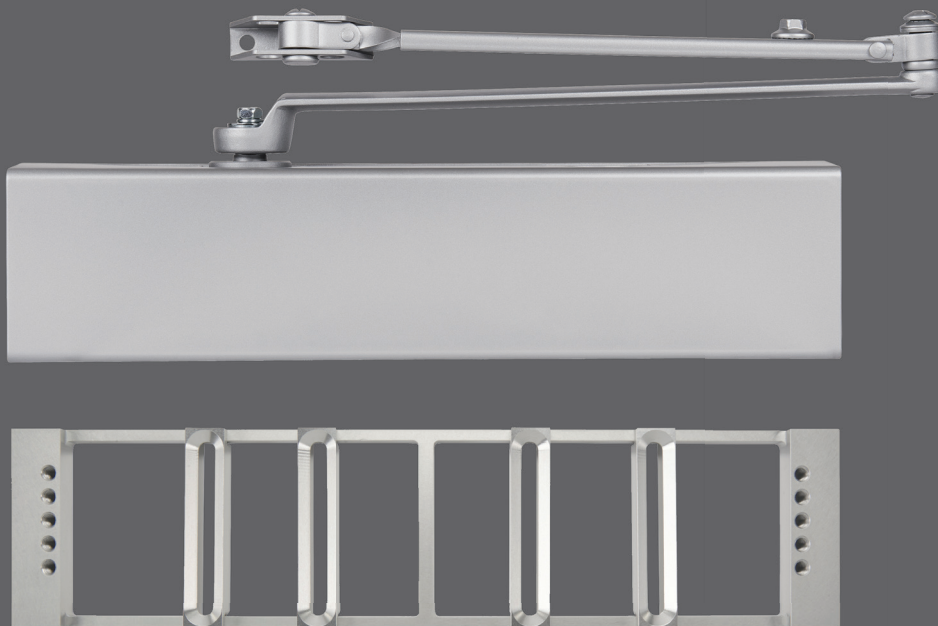
Small Business



Restaurants



Heavy Duty All-In-One Door Closer



and FlexPlate