

CAUTION:
Please use four alkaline batteries for the best performance.

A. Please change programming code before operating this lockset.

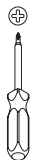
CARE and MAINTENANCE

The following instructions should be followed to protect and maintain your lockset:

A. Do not use any chemical products containing alcohol, benzene, hydrochloric acid or nitric acid, and avoid using sharp or abrasive objects to clean this lockset.

B. Periodically clean with mild soap and a soft cloth only.

Pre-installation — Tools Required / Hardware Included



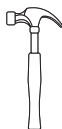
Optional



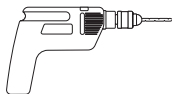
Optional



Optional



Optional



Optional



Table of Contents

Parts List	2
INSTALLATION INSTRUCTIONS	3
Step 1 Door Preparation	3
Step 2 Door Jamb Preparation	3
Step 3 Select the Proper Latch Backset	4
Step 4 Install the Latch	4
Step 5 Preparation for Installation	5
Step 6A Setting the Exterior Spindle (Right Hand Door)	6
Step 6B Setting the Interior Spindle (Right Hand Door)	6
Step 6C Setting the Exterior Spindle (Left Hand Door)	7
Step 6D Setting the Interior Spindle (Left Hand Door)	7
Step 6E Setting the Interior Spindle (continued)	8
Step 7 Installing the Exterior Assembly	8
Step 8 Installing the Interior Assembly	9
Step 9 Locking & Unlocking	10
Step 10 Programming	11
Step 11 Restoring to Factory Settings	12
Step 12 Troubleshooting	13

APPENDICES

Appendix A Removing Levers for Rekeying or Re-Handing	15
Appendix B Removing & Replacing the Cylinder and Collar	16

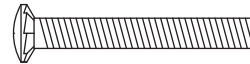
To view these instructions
online or for a Spanish
version, scan this QR code.



Part	Description	Quantity
A	Key	2
B	Cylinder	1
C	Exterior Assembly	1
D	Power Cable	1
E	Latch	1
F	Mounting Plate	1
G	Interior Assembly	1

Part	Description	Quantity
H	Decorative Cover	1
I	Battery Cover	1
J	Lever	2
K	Strike Plate	1
L	Dust Box	1
M	Round Corner Faceplate	1
N	Collar	2

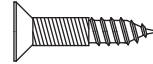
BB — 1-1/4" (32mm) Mounting Plate Screws [Qty: 2]



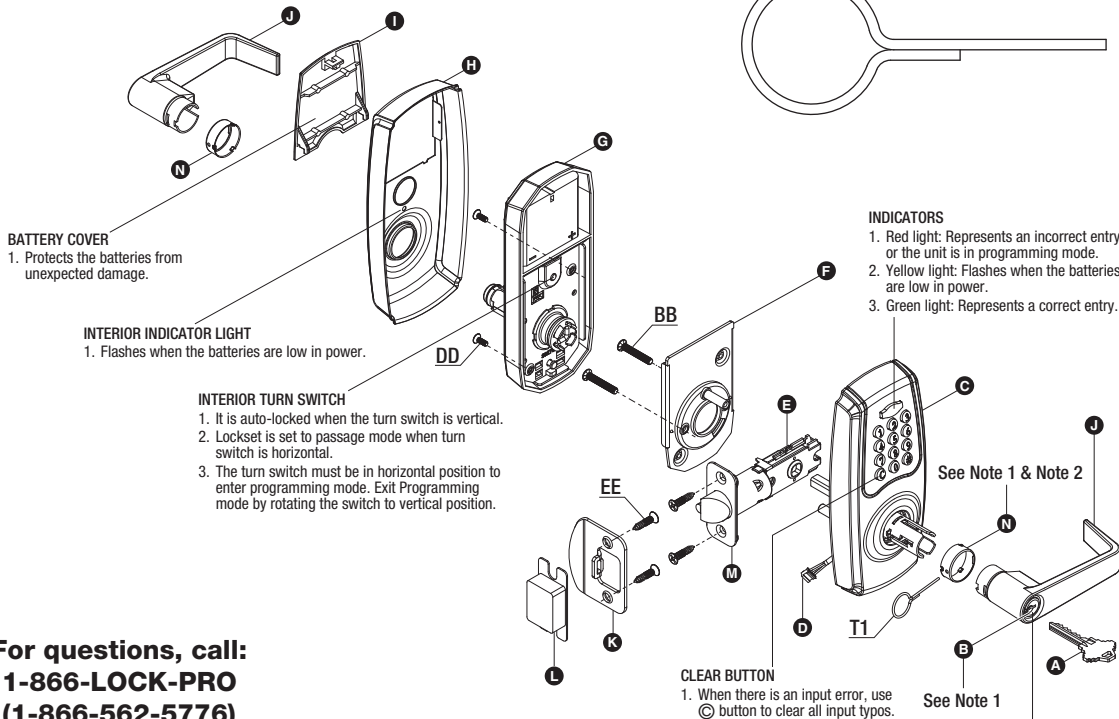
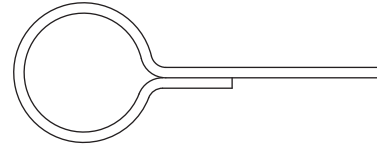
DD — 5/16" (8mm) Battery Compartment Screws [Qty: 2]



EE — 3/4" (19mm) Latch & Strike Plate Screws [Qty: 4]



T1 — Catch tool [Qty: 1]



BATTERY COVER

1. Protects the batteries from unexpected damage.

INTERIOR INDICATOR LIGHT

1. Flashes when the batteries are low in power.

INTERIOR TURN SWITCH

1. It is auto-locked when the turn switch is vertical.
2. Lockset is set to passage mode when turn switch is horizontal.
3. The turn switch must be in horizontal position to enter programming mode. Exit Programming mode by rotating the switch to vertical position.

INDICATORS

1. Red light: Represents an incorrect entry or the unit is in programming mode.
2. Yellow light: Flashes when the batteries are low in power.
3. Green light: Represents a correct entry.

CLEAR BUTTON

1. When there is an input error, use © button to clear all input typos.

See Note 1 & Note 2

See Note 1

MECHANICAL CYLINDER OVERRIDE

1. To unlock the lockset by a valid key.

**For questions, call:
1-866-LOCK-PRO
(1-866-562-5776)**

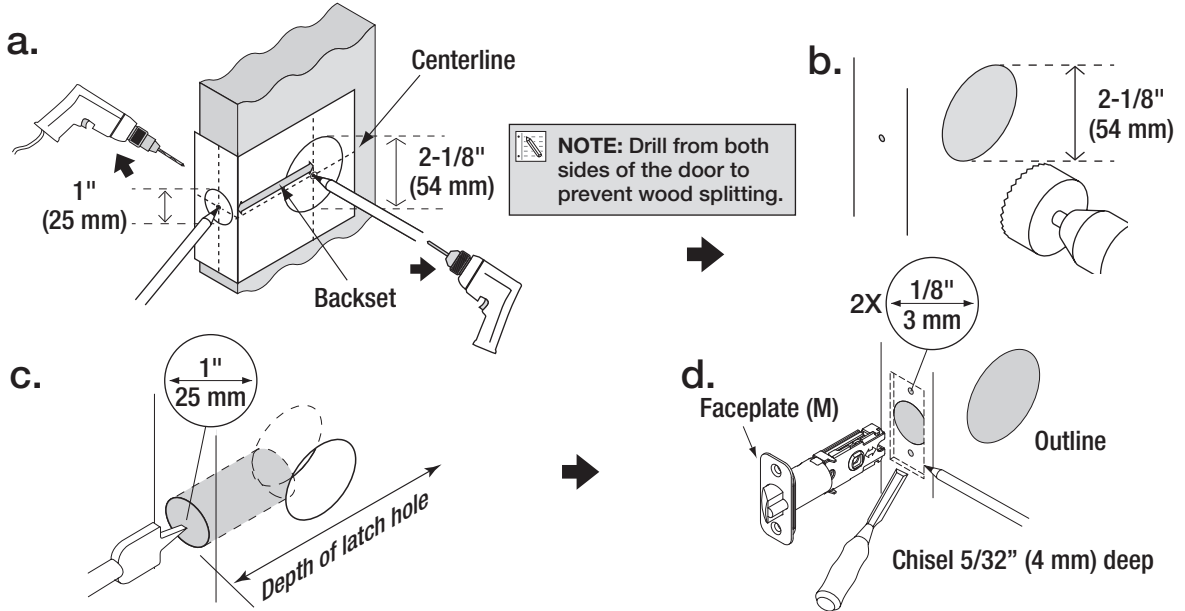
Note 1: Cylinder (B) and collar (N) are pre-installed in the exterior lever (J).

Note 2: Collar (N) is pre-installed on interior lever (J).

1 Door Preparation

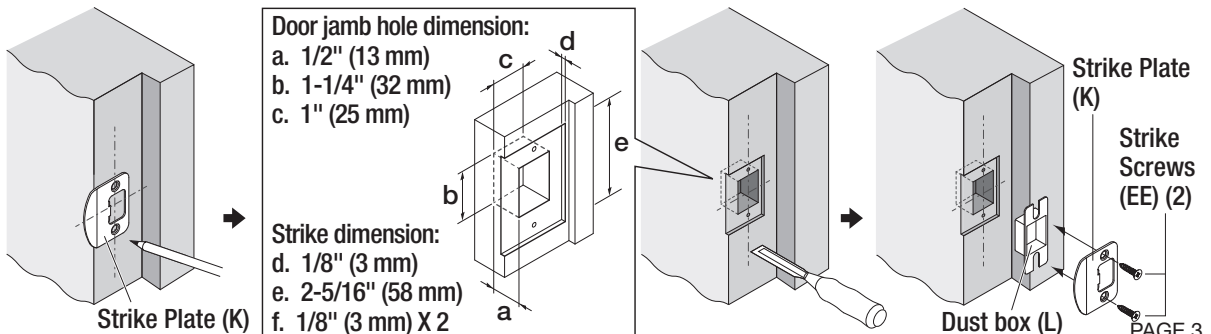
NOTE: If your door is pre-drilled, check the hole sizes to make sure they are the proper size. If they are the proper size, skip to Step 3.

Use the included template to mark the door and drill holes, and the latch (E) to chisel out the mortise.



2 Door Jamb Preparation

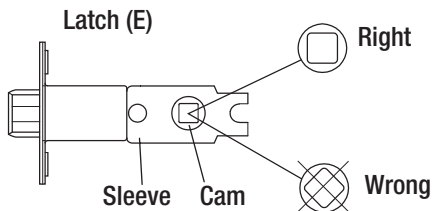
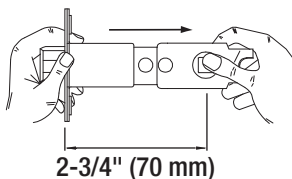
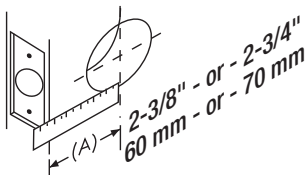
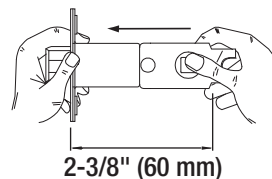
Prepare the door jamb – use the strike plate as a template to drill 1/8" screw holes and chisel out the mortise. The strike plate must fit flush with the surface of the door jamb.



3 Select the Proper Latch Backset

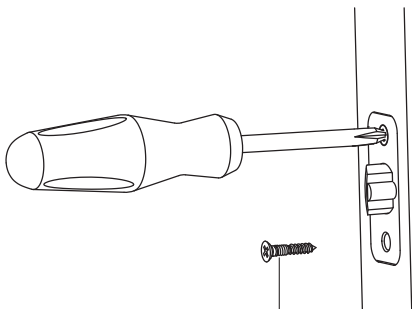
**CAUTION:**

Be sure the latch cam is upright before making any backset adjustment.

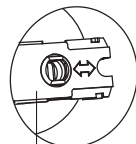
**a.****c.**

- Backset is the distance from the door edge to the center of the 2-1/8" (54 mm) hole on the door face.
- The latch (E) can be adjusted to fit either a 2-3/8" (60 mm) or a 2-3/4" (70 mm) Backset by sliding the Cam with the square hole towards or away from the latch. The 2-3/8" Backset is common for residential doors.

4 Install the Latch



Latch Screws (EE)

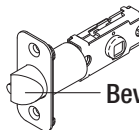


Latch (E)

- Insert the latch into the 1" hole in the door edge as shown.



Be sure the bevelled face of the latch bolt is towards the door jamb.



Bevelled face of the bolt

- Insert two Latch Screws (EE) through the holes in the faceplate and tighten firmly.

5 Preparation for Installation



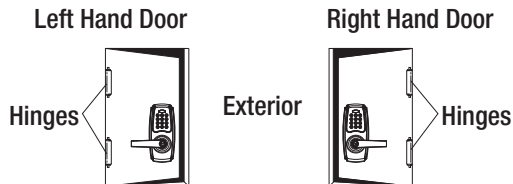
CAUTION:
DO NOT PROCEED WITH INSTALLATION WITHOUT SETTING THE EXTERIOR & INTERIOR SPINDLES FOR THE HAND OF YOUR DOOR!

5A. Determine the Handing of the Door

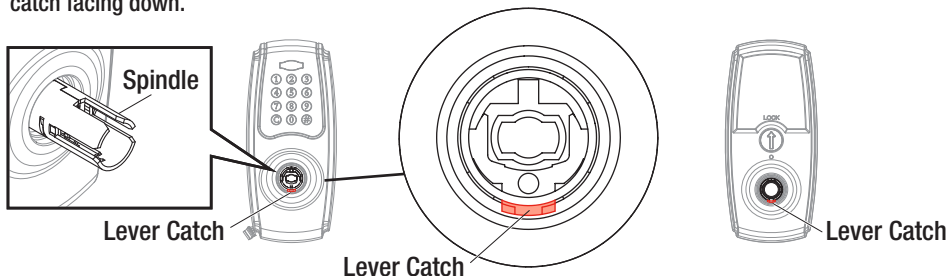
A1. As you stand outside the room looking at the exterior face of the door:

- If the hinges are on the left, it is a Left Hand door.
- If the hinges are on the right, it is a Right Hand door.

The lever can be installed on doors that swing into a room or swing out of a room.



A2. This leverset is packaged with the exterior & interior spindles in the neutral position (non-handed) with the lever catch facing down.

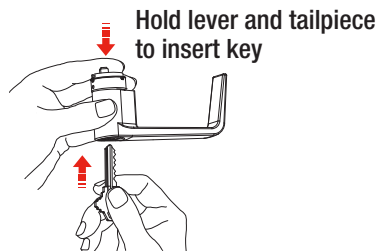


A3. Both spindles must be set to the correct handed position in Step 6 before installation.

5B. Insert Key in Exterior Lever Assembly

B1. The exterior lever (J) has the cylinder (B) and collar (N) pre-installed. Insert the key (A) while holding the lever and cylinder tailpiece together to prevent accidental component removal.

Do not remove the label on the lever until after installation.



6A Setting the Exterior Spindle — (Right Hand Door) Note: If you have a left hand door skip to page 7.

Right Hand Door

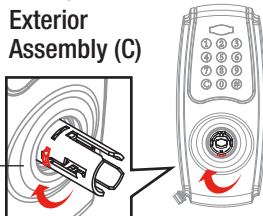


Hinges

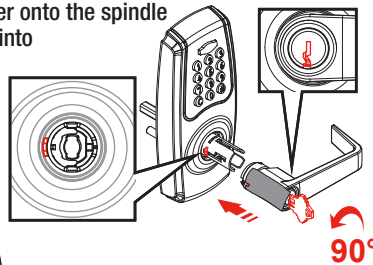
After installation, the exterior lever will point towards the hinges of the door.

- A1. Rotate the exterior spindle clockwise 90 degrees until it clicks into place. The lever catch will face away from the hinges of the door.

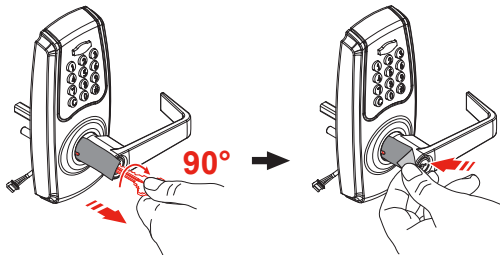
Lever catch away from hinges



- A2. Align the exterior lever assembly with the spindle. Rotate the key 90 degrees counter-clockwise. Insert the lever onto the spindle until it clicks into place on the lever catch.



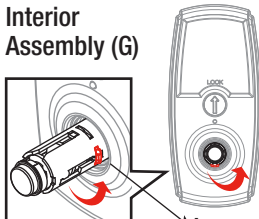
- A3. Rotate the key 90 degrees clockwise back to its home position and remove. Remove the label.



6B Setting the Interior Spindle — (Right Hand Door)

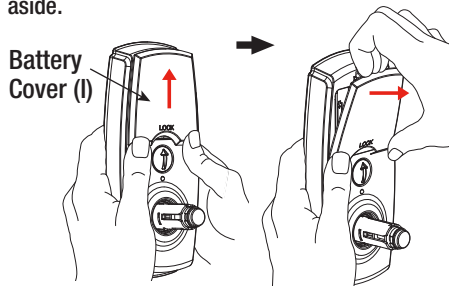
- B1. Rotate the interior spindle counter-clockwise 90 degrees until it clicks into place. The lever catch will face away from the hinges of the door.

Interior Assembly (G)



Lever catch away from hinges

- B2. Remove the battery cover (I) from the interior assembly (G) by lifting it up and pulling out from its top and set it aside.



6c Setting the Exterior Spindle — (Left Hand Door)



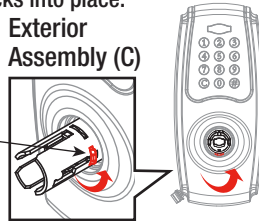
Hinges

Left Hand Door

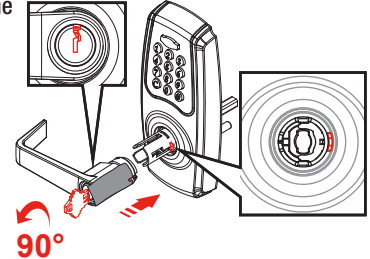
After installation, the exterior lever will point towards the hinges of the door.

- C1. Rotate the exterior spindle counter-clockwise 90 degrees until it clicks into place. The lever catch will face away from the hinges of the door.

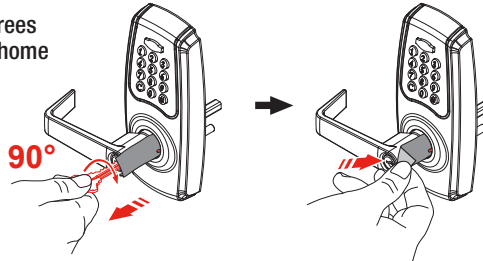
Lever catch away from hinges



- C2. Align the exterior lever assembly with the spindle. Rotate the key 90 degrees counter-clockwise. Insert the lever onto the spindle until it clicks into place on the lever catch.



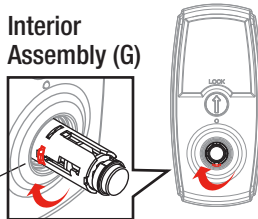
- C3. Rotate the key 90 degrees clockwise back to its home position and remove. Remove the label.



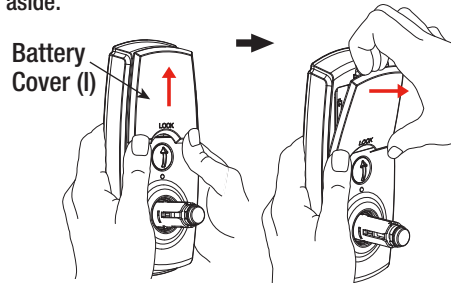
6D Setting the Interior Spindle — (Left Hand Door)

- D1. Rotate the interior spindle clockwise 90 degrees until it clicks into place. The lever catch will face away from the hinges of the door.

Interior Assembly (G)
Lever catch away from hinges

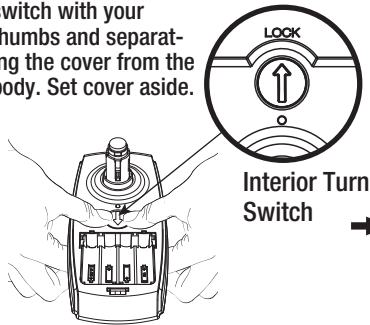


- D2. Remove the battery cover (I) from the interior assembly (G) by lifting it up and pulling out from its top and set it aside.

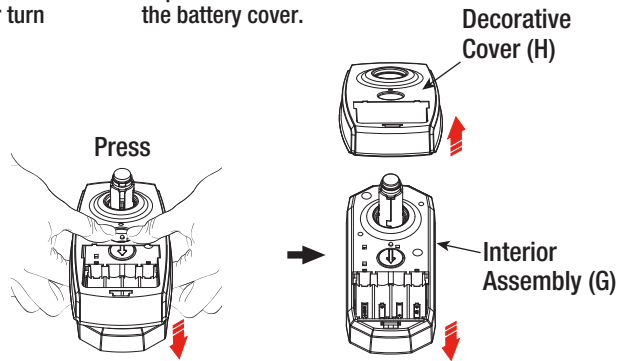


6E Setting the Interior Spindle (continued)

E1. Remove the decorative cover (H) from the interior assembly by pressing on the interior turn switch with your thumbs and separating the cover from the body. Set cover aside.



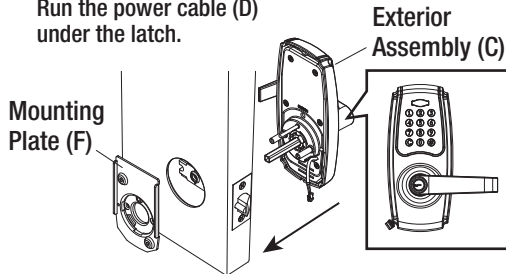
E2. Separate the decorative cover and set it aside with the battery cover.



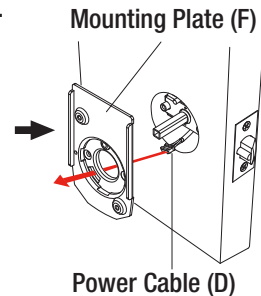
7 Installing the Exterior Assembly

(Right Hand door installation shown below)

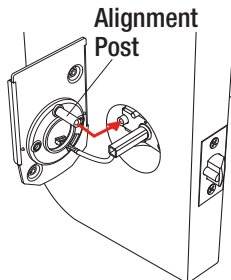
A. Place the exterior assembly (C) against the exterior face of the door while inserting its square drive spindle through the square hole in the latch cam. Run the power cable (D) under the latch.



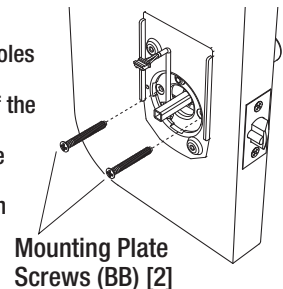
B. Insert the power cable through the slot in the mounting plate (F).



C. Orient the alignment post of the mounting bracket with the corresponding post on the exterior assembly and press the mounting bracket against the interior door face.

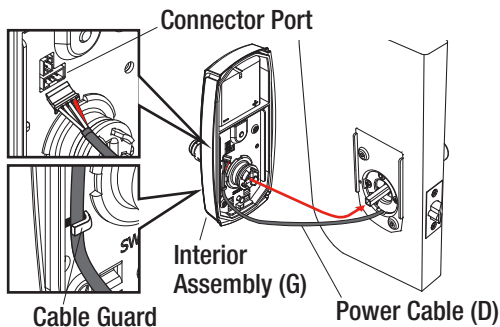


D. Insert two mounting plate screws (BB) through the holes in the mounting plate and engage the screw posts of the exterior assembly. Tighten firmly. Check to make sure that the exterior assembly does not look crooked with respect to the door.

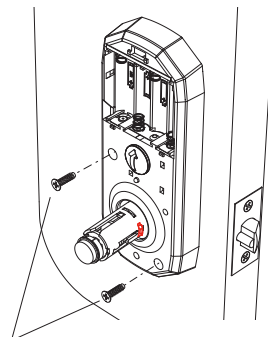


8 Installing the Interior Assembly

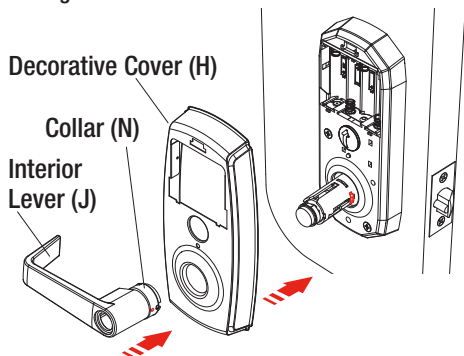
- A. Insert power cable (D) firmly into the connector port on the interior assembly (G). Secure the cable in the cable guard. Align the square hole in the interior assembly with the square drive spindle of the exterior assembly and press the interior assembly against the interior door face.



- B. Insert two battery compartment screws (DD) and tighten firmly.

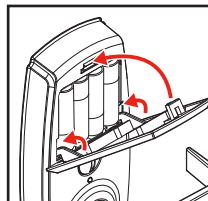


- C. Align and press the decorative cover (H) onto the interior assembly. Make sure that the collar (N) is placed correctly on the interior lever (J) and install the interior lever assembly onto the interior spindle until it clicks into place. The lever will point towards the hinges.

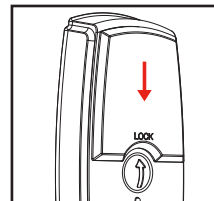


- D. Insert four new alkaline AA batteries in the battery compartment. Install the battery cover (I) by hooking the bottom into the corresponding slots in the interior assembly. Rotate it up and let it drop down into place.

Install batteries



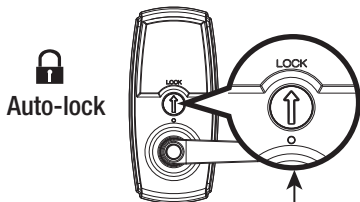
Install battery cover



Proceed to the User Guide for programming the lockset.

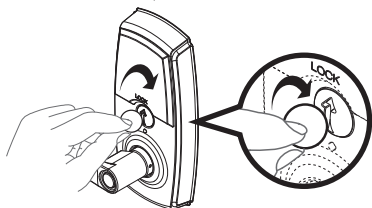
9 How to Lock / Unlock / Program the Lockset

1 AUTO-LOCK / PASSAGE MODE

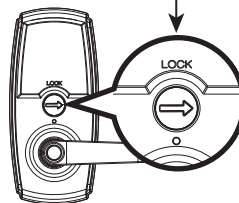


Use a flat tool to turn the slotted interior turn switch clockwise as shown from vertical position to horizontal position to deactivate auto-locking mode. The device then serves as a passage lever and is in programming mode.

After programming, turn the interior turn switch back to vertical to exit programming mode and record programming changes.



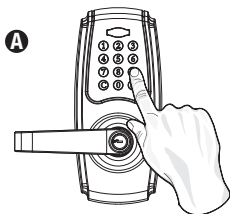
 Passage mode



Rotate interior turn switch clockwise to horizontal position as shown to deactivate auto-locking mode.

2 HOW TO UNLOCK THE LOCKSET

 To unlock

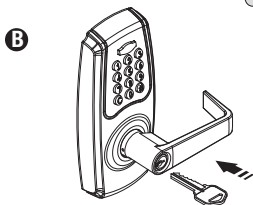


Enter the correct user code or programming code.

Upon the green indicator light on and a short beep heard, turn the outside lever to unlock.

When the green indicator light turns on and a short beep is heard, turn the exterior lever to unlock.

 The keypad is temporarily disabled after 4 consecutive incorrect entries. An alarm beep will sound for 10 seconds followed by a 60 second lockout while the indicator light blinks red.



Use a mechanical key to lock or unlock.

When using the key, the lever functions as a Storeroom function lock in which the exterior lever must remain locked when the key is removed.

10 Programming

BASIC SETTINGS

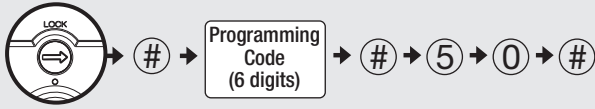
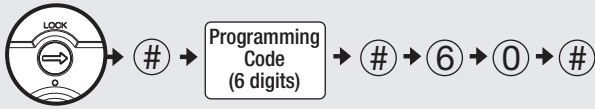
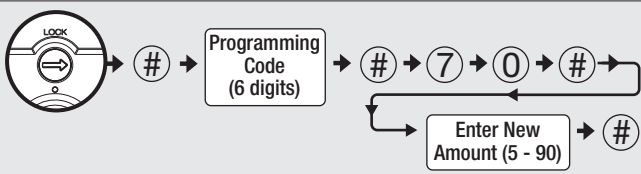
<p>Change Programming Code</p>	<ul style="list-style-type: none"> • Programming Code can be used to program or unlock the lockset. • The default Programming Code is "123456". 	
<p>Add a User Code(s)</p>	<ul style="list-style-type: none"> • User Code can be used to unlock the lockset. • User Code capacity: 99 sets (4-8 digits). 	
<p>Delete individual User Code(s)</p>	<ul style="list-style-type: none"> • Delete individual User Code(s). 	
<p>Delete ALL User Codes</p>	<ul style="list-style-type: none"> • Delete ALL User Codes at once. 	



Remember to turn the interior turn switch to vertical position to enable auto-lock mode after programming.

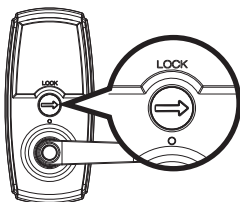
10 Programming (continued)

ADVANCED SETTINGS

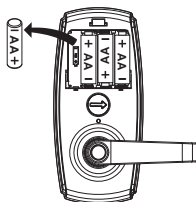
Vacation Mode (Start/End)	<ul style="list-style-type: none">• Start vacation mode to temporarily disable ALL User Codes.• Redo the following steps to end vacation mode and recover User Code access.	
Volume Control	<ul style="list-style-type: none">• Turn on / off door lock operation volume.• Volume is always on in the programming mode.	
Auto-lock Delay Timer	<ul style="list-style-type: none">• Default Auto-lock Delay Timer : 5 seconds• Auto-lock Delay Timer range: 5 -90 seconds	

- ⚠ • Remember to turn the interior turn switch to vertical position to enable auto-lock mode after programming.
- The lockset will exit the programming mode and revert to the stand-by status if no input is made in 10 seconds.
- 3 Beeps means something was entered incorrectly. Please redo the step again.

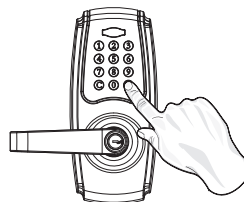
11 Restoring to Factory Settings



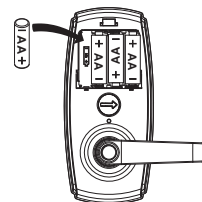
- Rotate interior turn switch to horizontal position.



- Remove one battery





- Press and hold # until all batteries are installed again.
- Successful reset is verified by a 3 second beep followed by a short beep.
- Rotate the interior turn switch back to vertical to lock in changes and return to auto-lock mode.



1. This will erase all stored information.
2. The Programming Code will be restored to default 1-2-3-4-5-6.

12 Troubleshooting

1 INSTALLATION

PROBLEM	CORRECTIVE ACTION
A. The latch does not operate correctly after installation.	1. Make sure the backset on the latch is set to the proper length and that the bevelled surface of the bolt faces the strike plate and door jamb.
B. Cannot remove key after the lock is installed.	1. The key should be turned counter-clockwise for installing the exterior lever, and then turned clockwise to remove. If the key was turned clockwise for installation, they key will be trapped. Turn the key to vertical position, remove the exterior lever assembly and re-install.  

2 OPERATION

PROBLEM	CORRECTIVE ACTION
A. Battery indicator keeps flashing.	1. The batteries are getting low. Please replace with four new batteries for the best performance (AA alkaline batteries only).
B. Keypad not responding.	1. Check the battery installation. 2. The batteries are getting low if the battery indicator keeps flashing. Please replace with four new batteries for the best performance (AA alkaline batteries only). 3. Make sure the cable is well-connected to the port, and was not damaged during installation. 4. Make sure the lock is not in Passage mode.
C. Programming code can not be changed.	1. Please refer to Step 12 (p. 19) in the user guide to restore factory settings and reprogram all codes.
D. What should I do if wrong code was entered?	1. Press Ⓢ button once and continue to input code according to regular procedures.

12 Troubleshooting (continued)

2 OPERATION

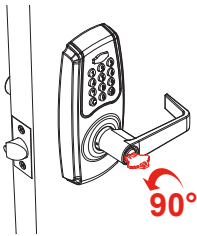
PROBLEM	CORRECTIVE ACTION
E. Cannot delete all user codes.	<ol style="list-style-type: none">1. Make sure the whole code entering process is completed within 10 seconds, otherwise the unit will time out.2. Make sure the programming code has been entered correctly.
F. Cannot add a new user code.	<ol style="list-style-type: none">1. Make sure the whole code entering process is completed within 10 seconds, otherwise the unit will time out.2. Make sure the programming code has been entered correctly.3. The new user code will not be accepted when the capacity is full. Try to delete any or some existing user codes and then add new one(s) again. A user code must be at least 4 to 8 digits.
G. "Auto lock" does not function.	<ol style="list-style-type: none">1. The batteries are getting low if the battery indicator keeps flashing. Please replace with four new batteries for the best performance (AA alkaline batteries only).2. Make sure the INTERIOR TURN SWITCH is vertical .3. Make sure the key is withdrawn from the lock.
H. Lockset is not able to unlock by Keypad.	<ol style="list-style-type: none">1. Make sure you have entered the correct user code.2. The battery is low if the battery indicator light keeps flashing. Please replace with four new batteries (AA alkaline batteries only).
I. Lockset is unable to reset.	<ol style="list-style-type: none">1. Please refer to Step 12 (p. 19) in the user guide to restore factory settings.2. The battery is low if the battery indicator light keeps flashing. Please replace with four new batteries.
J. Operate the lockset in darkness.	<ol style="list-style-type: none">1. Press any button to activate the lockset back light.
K. The red indicator is still on after programming is completed.	<ol style="list-style-type: none">1. If red indicator keeps flashing after multiple errors, remove a battery, then wait for indicator to stop and re-install the battery.2. If red indicator is on after programming, rotate the interior turn switch to vertical position for quick exit, or wait 10 seconds to resume to stand-by status.

A Appendix A: Removing Levers for Rekeying or Re-Handing

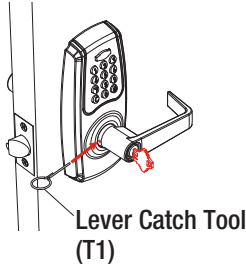
The example below shows the removal of the exterior lever and re-handing from a Right Hand door installation to a Left Hand door installation.

In some cases, the exterior lever will need to be removed, usually for two reasons (1) rekeying the cylinder or (2) re-handing the lockset for installation on a door with opposite handing. The following steps will facilitate both scenarios.

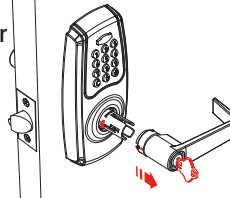
- A. Insert the key in the cylinder and turn 90 degrees counter-clockwise.



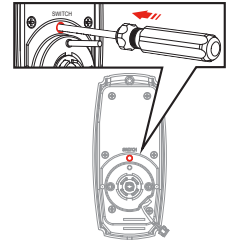
- B. Press the Lever Catch tool (T1) into the catch hole in the collar (N).



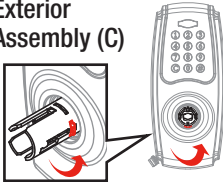
- C. Carefully remove the exterior lever assembly while also removing the lever catch tool. If access to the cylinder is all that is required (see Appendix B), then the exterior lever assembly can then be replaced according to the instructions in Step 6. For re-handing, continue to step D.



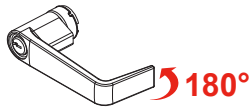
- D. Place the exterior spindle in the neutral position by inserting a screwdriver into the hole marked "SWITCH" and push. The spindle will return to the neutral position.



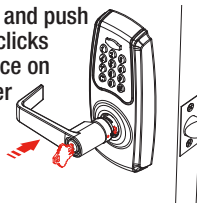
- E. Rotate the spindle into position for the hand of the door according to the instructions in Step 6. Exterior Assembly (C)



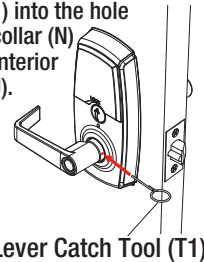
- F. Rotate the exterior lever assembly 180 degrees.



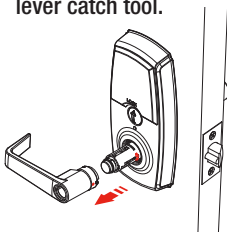
- G. Insert the key and rotate it 90 degrees counter-clockwise. Place the lever onto the spindle and push until it clicks into place on the lever catch.



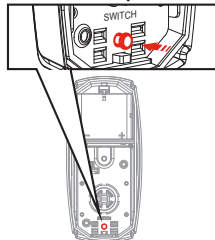
- H. Insert the lever catch tool (T1) into the hole in the collar (N) of the interior lever (J).



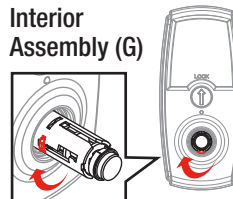
- I. Remove the interior lever from the spindle as you remove the lever catch tool.



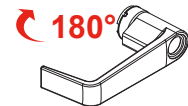
- J. Push the SWITCH button to place the interior spindle in the neutral position.



- K. Rotate the spindle into position for the hand of the door according to the instructions in Step 6. Interior Assembly (G)

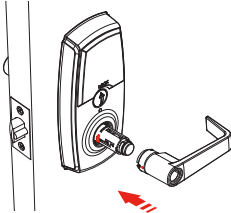


- L. Rotate the interior lever 180 degrees.

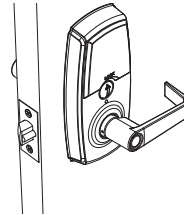


A Appendix A: (continued)

M. Place the lever onto the spindle and push until it clicks into place on the lever catch.

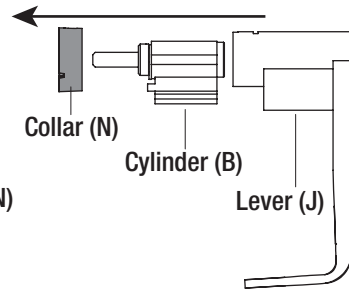


N. The lever lockset has been re-installed on a door of the opposite handing. See the User Guide for programming.

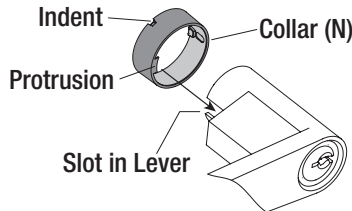


B Appendix B: Removing & Replacing the Cylinder and Collar

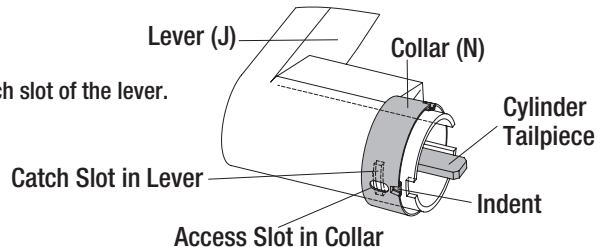
A. The exterior lever (J) has the cylinder (B) and collar (N) pre-installed. To access the cylinder, first remove collar (N), followed by the cylinder.



B. To re-assemble, insert the cylinder into the lever as shown. Place the collar on the lever and push on until it stops. For best results, install the collar with the protrusion leading into the slot of the lever.



C. The access slot of the collar will be seated over the catch slot of the lever.



To view these instructions online or for a Spanish version, scan this QR code.



If the lock appears to be damaged or does not operate properly, call 1-866-LOCK-PRO.

For FCC Compliance, please visit: <https://www.hamptonproducts.com/legal/fccstatement>

TEN YEAR LIMITED WARRANTY – For warranty details or to make a warranty claim for repair or replacement, please visit www.brinkscommercial.com or call 1-866-LOCK-PRO (1-866-562-5776). Return of defective product and receipt may be required for warranty claims.

50 Icon, Foothill Ranch, CA 92610-3000
Customer Support: 1-866-LOCK-PRO (1-866-562-5776)
www.brinkscommercial.com
©2023 Hampton Products International Corp.
999-00823 REV 03/23