



BRINKS

A TRUSTED NAME IN SECURITY SINCE 1859™

COMMERCIAL

PORTABLE SECURITY





COMMERCIAL

COMMERCIAL PORTABLE SECURITY CATALOG CONTENTS

As a trusted brand in security products, the Brinks name is synonymous with 'peace of mind', strength, trust, safety, and quality. Our products deliver reliable performance, durability, provide superior cut resistance, and are built to meet the needs of tradesmen and professionals in the field.

Our products use robust materials such as BORON Carbide Steel shackles, lock bodies made of Solid Brass, Solid Stainless Steel, Heavy Duty Laminated Steel plates, and feature pick resistant cylinders. Each Brink's Commercial padlock is designed to exceed rigorous ASTM testing standards, and uses the highest quality materials to provide you with years of worry free use.

CONTENTS:

LAMINATED STEEL

BRASS

RESETTABLE BRASS

LAMINATED STEEL XT SERIES

WEATHER RESISTANT LAMINATED STEEL

RESETTABLE WEATHER RESISTANT

STAINLESS STEEL DISCUS

SOLID BODY STAINLESS STEEL

SOLID BODY STEEL

CABLES

. KEYED LOCKING

. LOOPED ENDS

HASPS

BULK PACKS



COMMERCIAL



COMMERCIAL LAMINATED STEEL

The Brinks Commercial grade padlock is a 50mm (2-inch) wide lock body, with steel laminates. Included with this rugged padlock is a full body, soft touch, TPE elastomeric jacket that helps reduce scratching or your property while also protecting the lock itself from the elements. This product also features a superior cut resistant matte finish BORON steel shackle, double stainless steel locking balls, and a 5-pin, pick resistant cylinder.



Pack	Item Number	Description	Case Pack QTY	UPC Code	Cut Strength	Pull Strength	KEY BLANKS		
							KB	Axxess	ILCO
1 pack	672-50001-4	50MM COMM LAMINATED STEEL, BORON SHKL	4	039208984942	10000 lbs.	5000 lbs.	M10	93	1092
2 pack	672-50201-4	50MM COMM LAMINATED STEEL, BORON SHKL, 2PK	4	039208985468	10000 lbs.	5000 lbs.	M10	93	1092
4 pack	672-50401-4	50MM COMM LAMINATED STEEL, BORON SHKL, 4PK	4	039208984980	10000 lbs.	5000 lbs.	M10	93	1092



Pack	Item Number	Description	Case Pack QTY	UPC Code	Cut Strength	Pull Strength	KEY BLANKS		
							KB	Axxess	ILCO
1 pack	672-52001-4	50MM COMM LAMINATED STEEL, 2" BORON SHKL	4	039208985000	11000 lbs.	5000 lbs.	M10	93	1092
2 pack	672-52201-4	50MM COMM LAMINATED STEEL, 2" BORON SHKL, 2PK	4	039208988650	11000 lbs.	5000 lbs.	M10	93	1092
4 pack	672-52401-4	50MM COMM LAMINATED STEEL, 2" BORON SHKL, 4PK	4	039208985024	11000 lbs.	5000 lbs.	M10	93	1092



Pack	Item Number	Description	Case Pack QTY	UPC Code	Cut Strength	Pull Strength	KEY BLANKS		
							KB	Axxess	ILCO
1 pack	672-60001-4	60MM COMM LAMINATED STEEL, BORON SHKL	4	039208985048	17000 lbs.	8000 lbs.	M10	93	1092

COMMERCIAL



COMMERCIAL BRASS

Brinks Commercial brass padlocks feature solid brass lock bodies which resist corrosion due to the elements, making them perfect for outdoor use. Our solid brass products offer you a variety of items, including traditional full size keyed padlocks, a resettable model that allows you to select your own personal combination, or a versatile adjustable shackle model where longer shackle lengths are required. These locks feature a resettable dial combination so you can easily reset and select your own personal/secure combination.



Pack	Item Number	Description	Case Pack QTY	UPC Code	Cut Strength	Pull Strength	KEY BLANKS		
							KB	Axxess	ILCO
1 pack	671-49002-4	50MM BRASS RESETTABLE COMBO 2-3/8" BORON SHKL	4	039208984928	7000 lbs.	1000 lbs.	N/A	N/A	N/A
2 pack	671-49202-4	50MM BRASS RESETTABLE COMBO 2-3/8" BORON SHKL, 2PK	4	039208984935	7000 lbs.	1000 lbs.	N/A	N/A	N/A



Pack	Item Number	Description	Case Pack QTY	UPC Code	Cut Strength	Pull Strength	KEY BLANKS		
							KB	Axxess	ILCO
1 pack	671-50001-4	50MM COMMERCIAL BRASS SOLID BODY	4	039208988643	7000 lbs.	1000 lbs.	VR2	104	VR91



Pack	Item Number	Description	Case Pack QTY	UPC Code	Cut Strength	Pull Strength	KEY BLANKS		
							KB	Axxess	ILCO
1 pack	671-50061-4	50MM COMMERCIAL BRASS SOLID BODY, ADJ SHKL	4	039208988667	8700 lbs.	2100 lbs.	VR7	None	VR91AR

COMMERCIAL



COMMERCIAL LAMINATED STEEL XT SERIES

Brinks XT Commercial grade padlocks feature a rugged and tough laminated steel lock body. This series of padlocks feature a consumer preferred powder coated finish designed to withstand all extreme weather conditions that subject normal padlocks to rust and corrosion. This product also features a highly cut resistant BORON shackle, stainless steel locking bars, and pick resistant cylinder.



Pack	Item Number	Description	Case Pack QTY	UPC Code	Cut Strength	Pull Strength	KEY BLANKS		
							KB	Axxess	ILCO
1 pack	677-44101-4	44MM XT COMMERCIAL, 1-1/2" BORON SHKL	4	039208218573	7000 lbs.	5100 lbs.	M1	69	1092

Pack	Item Number	Description	Case Pack QTY	UPC Code	Cut Strength	Pull Strength	KEY BLANKS		
							KB	Axxess	ILCO
1 pack	677-44102-4	44MM XT COMMERCIAL, 2-3/8" BORON SHKL	4	039208218580	9700 lbs.	5200 lbs.	M1	69	1092
2 pack	677-44202-4	44MM XT COMMERCIAL, 2-3/8" BORON SHKL, 2PK	4	039208218597	9700 lbs.	5200 lbs.	M1	69	1092
3 pack	677-44302-4	44MM XT COMMERCIAL, 2-3/8" BORON SHKL, 3PK	4	039208219495	9700 lbs.	5200 lbs.	M1	69	1092



Pack	Item Number	Description	Case Pack QTY	UPC Code	Cut Strength	Pull Strength	KEY BLANKS		
							KB	Access	ILCO
1 pack	677-50001-4	50MM XT COMMERCIAL BORON SHKL	4	039208218603	11000 lbs.	4700 lbs.	M10	69	1092

Pack	Item Number	Description	Case Pack QTY	UPC Code	Cut Strength	Pull Strength	KEY BLANKS		
							KB	Access	ILCO
2 pack	677-52201-4	50MM XT COMMERCIAL, 2" BORON SHKL, 2PK	4	039208218627	12000 lbs.	5700 lbs.	M10	69	1092



COMMERCIAL



COMMERCIAL LAMINATED STEEL WEATHER RESISTANT

The Brinks Commercial grade padlock is a 50mm (2-inch) wide lock body, with steel laminates. A full body, soft touch TPE elastomeric bumper enhances the additional weather resistant lock body cover to provide superior protection against the elements. A sliding keyway cover works to restrict dirt and road grime from getting into the lock's cylinder ensuring long lasting performance. This is one of our must rugged, outdoor, weather-resistant padlocks. The lock also features a superior cut resistant, matte finish BORON steel shackle, double stainless steel locking balls, and a 5-pin, pick resistant cylinder.



Pack	Item Number	Description	Case Pack QTY	UPC Code	Cut Strength	Pull Strength	KEY BLANKS		
							KB	Access	ILCO
1 pack	677-44052-4	XT PLUS WR 44MM W/ 2-3/8" BORON SHKL	4	039208222716	9700 lbs.	5200 lbs.	M10	93	1092

Pack	Item Number	Description	Case Pack QTY	UPC Code	Cut Strength	Pull Strength	KEY BLANKS		
							KB	Access	ILCO
1 pack	677-52051-4	XT PLUS WR 50MM W/ 2" BORON SHKL	4	039208222730	12000 lbs.	5700 lbs.	M10	93	1092



COMMERCIAL



COMMERCIAL WEATHER RESISTANT RESETTABLE

The Brinks Marine Lock is the ultimate lock for use in damp marine environments where corrosive salt air is present. The fully encased, soft touch elastomeric housing provides superior weather resistance, while also protecting your valuables from scratching. This 50mm (2-inch) zinc die cast lock body features an easy-to-use, 4-dial combination so you can select your own personalized combination. Easy to reset! Both the dials and the reset switch are located behind zinc covers for added protection from dirt and the elements. This product is ideal for all types of boat docks, trailers, and anywhere that salt air would corrode traditional steel locks.



Pack	Item Number	Description	Case Pack QTY	UPC Code	Cut Strength	Pull Strength	KEY BLANKS		
							KB	Axxess	ILCO
1 pack	673-80001-4	4-DIAL RESET COMBO MARINE SS	4	039208985086	7200 lbs.	1100 lbs.	M1	69	1092



COMMERCIAL



COMMERCIAL STAINLESS STEEL DISCUS

The Brinks shielded discus locks are constructed with a stainless steel body that resists corrosion. The STAINLESS STEEL shackle provides additional security through superior cut resistance. Our discus padlocks also feature a full radius rubber bumper that helps prevent scratches and dings on trucks, tool boxes, and other surface areas. The lock features a 4-pin cylinder which increases pick resistance. This product is ideal for all types of storage lockers or sheds, truck work boxes, and remote site storage.



Pack	Item Number	Description	Case Pack QTY	UPC Code	Cut Strength	Pull Strength	KEY BLANKS		
							KB	Axxess	ILCO
1 pack	673-70001-4	70MM COMMERCIAL DISCUS W/Stainless Steel	4	039208985055	8100 lbs.		M1	69	1092
2 pack	673-70201-4	70MM COMMERCIAL DISCUS W/Stainless Steel, 2PK	4	039208985079	8100 lbs.		M1	69	1092



Pack	Item Number	Description	Case Pack QTY	UPC Code	Cut Strength	Pull Strength	KEY BLANKS		
							KB	Axxess	ILCO
1 pack	673-80002-4	80MM COMMERCIAL DISCUS W/Stainless Steel	4	039208988636	13000 lbs.		M1	69	1092

COMMERCIAL



COMMERCIAL STAINLESS STEEL LAMINATED

The Brinks Commercial Stainless Steel Laminated padlock is ideal for use in applications where moisture and corrosion would be an issue for standard laminated steel padlocks. These locks feature 100% stainless steel laminates along with a rugged stainless steel shackle and stainless steel locking bars that make this lock well suited to any outdoor location. The bumpers on the top and bottom of the lock body provide protection against denting or scratching of your valuables.



Pack	Item Number	Description	Case Pack QTY	UPC Code	Cut Strength	Pull Strength	KEY BLANKS		
							KB	Access	ILCO
1 pack	677-44811-4	44MM STAINLESS STEEL LAMINATED W/ 2" STAINLESS STEEL SHACKLE	4	039208222723	5200 lbs.	1900 lbs.	M1	69	1092
2 pack	677-44812-4	44MM STAINLESS STEEL LAMINATED W/ 2" STAINLESS STEEL SHACKLE, 2PK	4	039208222839	5200 lbs.	1900 lbs.	M1	69	1092



Pack	Item Number	Description	Case Pack QTY	UPC Code	Cut Strength	Pull Strength	KEY BLANKS		
							KB	Access	ILCO
1 pack	677-52811-4	50MM STAINLESS STEEL LAMINATED W/ 2" STAINLESS STEEL SHACKLE	4	039208222747	8400 lbs.	1900 lbs.	M1	69	1092
4 pack	677-52814-4	50MM STAINLESS STEEL LAMINATED W/ 2" STAINLESS STEEL SHACKLE, 4PK	4	039208222846	8400 lbs.	1900 lbs.	M1	69	1092

COMMERCIAL



COMMERCIAL SOLID BODY STAINLESS STEEL

The Brinks Commercial Solid Body Stainless Steel padlock is the ultimate padlock for outdoor use in extreme environments, especially in areas where moisture can cause corrosion on traditional padlocks. These locks are 100% stainless steel, including the solid lock body, 1-inch shackle, inner springs, and cylinder housing. This product is ideal for use in any location where salt, dirt, grime, water, or other contaminants would corrode other materials. Works great on trailer or on-site storage facilities that are routinely subjected to the elements.

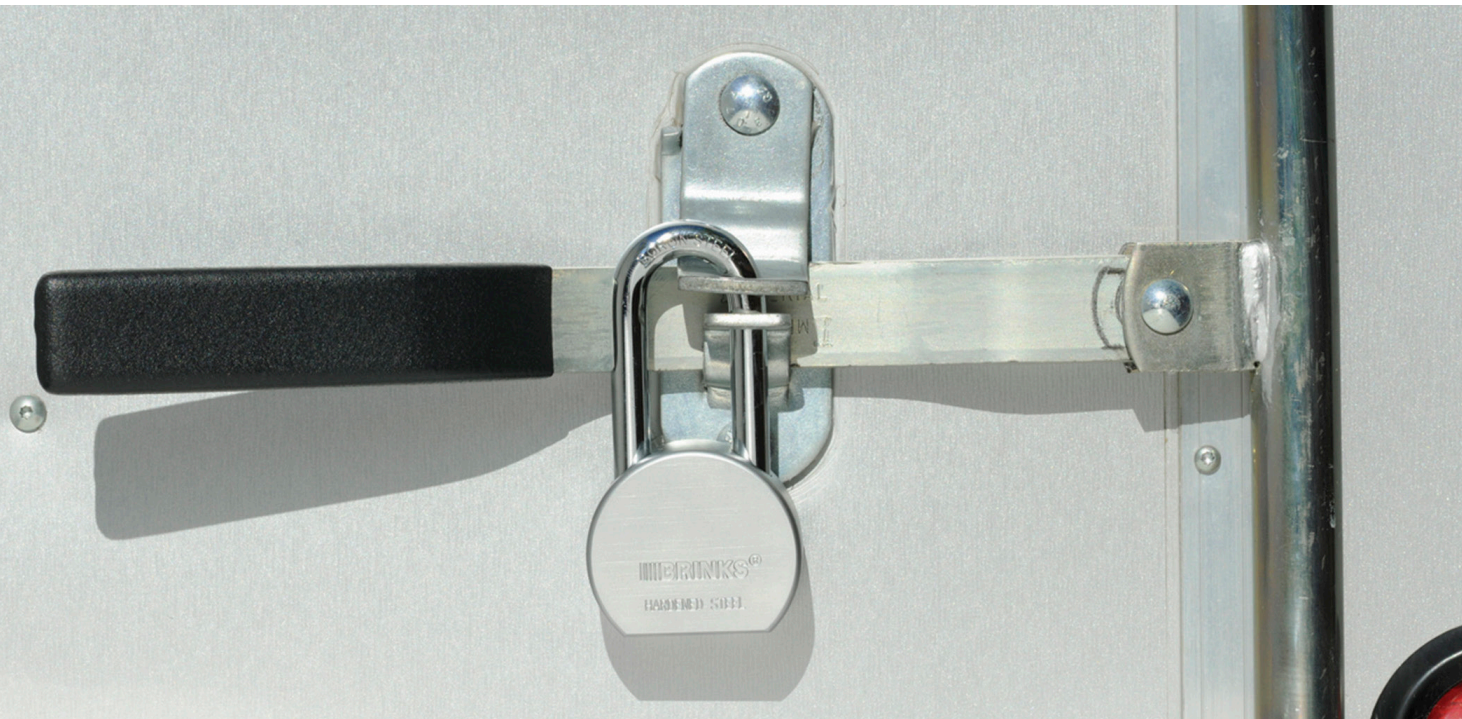


Pack	Item Number	Description	Case Pack QTY	UPC Code	Cut Strength	Pull Strength	KEY BLANKS		
							KB	Axxess	ILCO
1 pack	672-40811-4	37MM SOLID BODY STAINLESS STEEL, STAINLESS SHKL	4	039208217415	4300 lbs.	1600 lbs.	M1	69	1092



Pack	Item Number	Description	Case Pack QTY	UPC Code	Cut Strength	Pull Strength	KEY BLANKS		
							KB	Axxess	ILCO
1 pack	672-50811-4	50MM SOLID BODY STAINLESS STEEL, STAINLESS SHKL	4	039208271722	8400 lbs.	2400 lbs.	M1	69	1092

COMMERCIAL

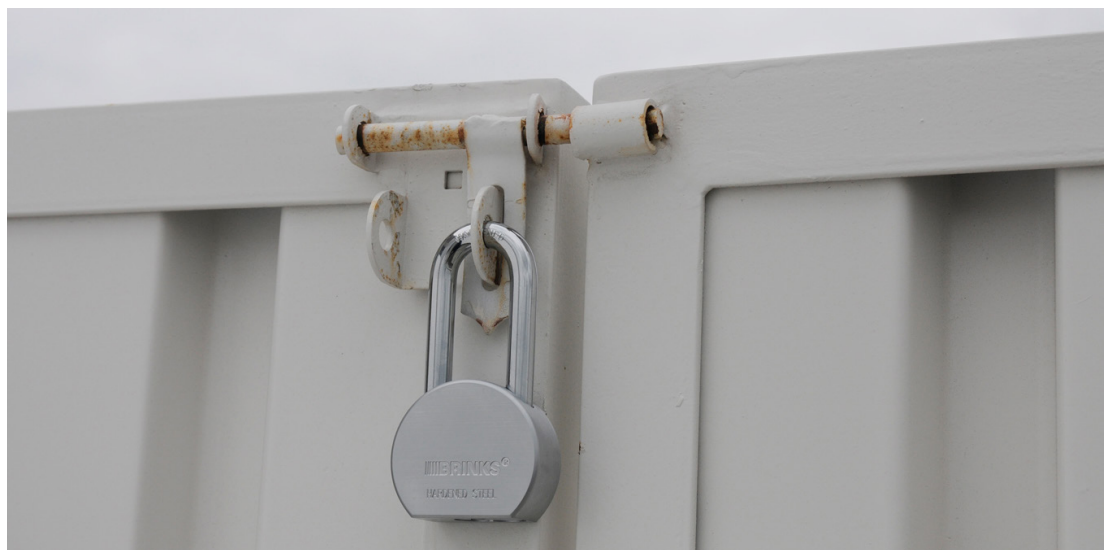


COMMERCIAL SOLID BODY STEEL

The Brinks 63.5mm Solid Body Steel Commercial grade padlock features a rugged solid steel lock body and 7/16 diameter bright chrome-plated BORON steel shackle that provides additional security through superior cut resistance. This padlock has a removable brass pin tumbler cylinder and double-steel ball bearing locking mechanism to increase pick resistance.



Pack	Item Number	Description	Case Pack QTY	UPC Code	Cut Strength	Pull Strength	KEY BLANKS		
							KB	Axxess	ILCO
1 pack	672-52701-4	COMMERCIAL, 2-1/2" SOLID BODY STL W/ 2" BORON SHACKLE	4	039208985031	17000 lbs.	10000 lbs.	A1045		



COMMERCIAL



COMMERCIAL CABLE KEYED LOCKING

Brinks Commercial flexible braided steel cable has a heavy duty vinyl protective wrap to prevent scratching and corrosion. This cable is 5/8 inch in diameter and 6 feet in length, making it ideal for locking job boxes, outdoor furniture, expensive grills, or other valuables left unattended outdoors. The cable also includes a unique reflective stripe for increased visibility at night or in darker conditions.



Pack	Item Number	Description	Case Pack QTY	UPC Code	Cut Strength	Pull Strength	KEY BLANKS		
							KB	Axxess	ILCO
1 pack	675-65801-3	5/8" X 6' COMM BRAIDED CABLE, M1 KEYWAY	3	039208220057	5000 lbs.		M1	69	1092



COMMERCIAL



COMMERCIAL CABLE LOOPED ENDS

Brinks Commercial flexible braided steel cable with a heavy duty vinyl protective wrap to prevent scratching and corrosion. This cable is 5/8 inch in diameter and 7 feet in length, featuring loop ends, that when used with one of our long shackle padlocks, provides versatility securing things like motorcycles, ATV's, jet skis, or other valuables on trailers.



Pack	Item Number	Description	Case Pack QTY	UPC Code	Cut Strength	Pull Strength	KEY BLANKS		
							KB	Axxess	ILCO
1 pack	675-62701-3	5/8" X 7' COMMERCIAL BRAIDED CABLE, LOOPED END	3	039208985796	5000 lbs.		N/A	N/A	N/A



COMMERCIAL



COMMERCIAL HASPS

Brinks Commercial Hasps feature sturdy steel construction for superior corrosion resistance. Fastening screws are included for your convenience.



Pack	Item Number	Description	Case Pack QTY	UPC Code	Cut Strength	Pull Strength	KEY BLANKS		
							KB	Axxess	ILCO
1 pack	672-74232-2	COMMERCIAL COMBO PUCK LOCK W/ ROUND HASP	2	039208985062			A1045	N/A	N/A



Pack	Item Number	Description	Case Pack QTY	UPC Code	Cut Strength	Pull Strength	KEY BLANKS		
							KB	Axxess	ILCO
1 pack	675-84501-4	COMMERCIAL 4.5" STEEL HASP	4	039208985093			N/A	N/A	N/A



Pack	Item Number	Description	Case Pack QTY	UPC Code	Cut Strength	Pull Strength	KEY BLANKS		
							KB	Axxess	ILCO
1 pack	675-87752-4	COMMERCIAL 7.75" DOUBLE HINGE HASP	4	039208985109			N/A	N/A	N/A

COMMERCIAL



COMMERCIAL BULK PACKS

Brinks bulk pack padlocks provide value and versatility for a variety of usage occasions. Each bulk pack features all padlocks keyed alike for convenience, and includes heavy duty padlocks for use in commercial buildings, factories, schools, or other commercial applications where utilizing the same key is required. Each lock offers superior cut resistance and pry resistant performance.



Pack	Item Number	Description	Case Pack QTY	UPC Code	Cut Strength	Pull Strength	KEY BLANKS		
							KB	Axxess	ILCO
24 pack	172-44002B	44MM LAMINATED STEEL, 2-3/8" SHKL, 24 KEYED ALIKE	1	039208985062	3600 lbs.	1300 lbs.	M1	69	1092

Pack	Item Number	Description	Case Pack QTY	UPC Code	Cut Strength	Pull Strength	KEY BLANKS		
							KB	Axxess	ILCO
4 pack	673-70401-2	70MM DISCUS W/Stainless Steel, 4 PK	2	039208985093	8100 lbs.		M1	69	1092

Pack	Item Number	Description	Case Pack QTY	UPC Code	Cut Strength	Pull Strength	KEY BLANKS		
							KB	Axxess	ILCO
6 pack	672-50601-2B	50MM COMM LAMINATED STL, BORON SHKL, 6PK BULK	2	039208985109	10000 lbs.	5000 lbs.	M10	93	1092

BULK PACK LAMINATED STEEL PADLOCKS

44MM LONG SHACKLE PADLOCKS - KEYED ALIKE

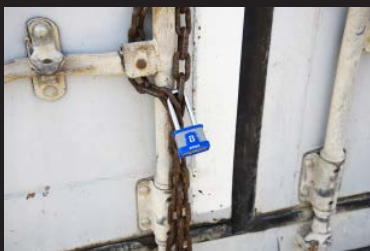
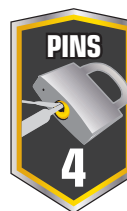
44MM LAMINATED STEEL PADLOCK WITH EXTRA LONG SHACKLE
ALL 24 PADLOCKS KEYED TO THE SAME KEY!



- Lock Body is constructed of laminated steel.
- Chrome plated hardened steel shackle
- Brass pin tumbler system
- Dual lever locking mechanism
- Lifetime warranty



This padlock is constructed of laminated steel, and features a 2-3/8 inch chrome plated hardened steel shackle. The lock is equipped with a brass pin tumbler cylinder for long lasting, smooth operation. The longer shackle is preferred by those looking to secure a cable, tool sheds, or other usage where a shorter shackle will not fit. Each lock is keyed alike for ease of use. Uses M1 keyblank. Lifetime warranty. As a global leader in security related products, the BRINKS™ name is synonymous with top quality merchandise to keep your valuables safe.



BULK PACK DISCUS PADLOCKS

70MM DISCUS PADLOCKS - KEYED ALIKE

70MM DISCUS PADLOCK WITH BORON STEEL SHACKLE
ALL 4 LOCKS KEYED TO THE SAME KEY!



- Lock body is constructed of stainless steel
- Boron steel shackle
- Black rubber bumper to protect valuables from scratching
- Round shielded design minimizes shackle exposure
- Lifetime warranty

Brinks 70MM discus lock is the perfect padlock for use on storage sheds, gates, tool boxes, moving trucks, or other places where the extra security of a shielded padlock is essential. The included full rubber jacket provides extra protection for your valuables by preventing scratching or denting of surfaces while in use. The four (4) locks included with this bulk pack are all keyed alike, which makes multiple security needs easy and efficient. No more searching for the right key - one key opens all four locks.



NOTES

This image shows a single page from a notebook. At the top, there is a black horizontal band with the word "COMMERCIAL" written in yellow, bold, sans-serif capital letters. Below this band is a large white rectangular area. Within this white area, near the top left, is another black horizontal band with the word "NOTES" written in yellow, bold, sans-serif capital letters. The rest of the white area is filled with horizontal ruling lines. The right edge of the page is perforated, indicating it is designed to be torn out. The entire page is set against a dark background with a subtle dot pattern.

This image shows a single page from a notebook. At the top, there is a black horizontal band with the word "COMMERCIAL" written in yellow, bold, sans-serif capital letters. Below this band is a large white rectangular area. Within this white area, near the top left, is another black horizontal band with the word "NOTES" written in yellow, bold, sans-serif capital letters. The rest of the white area is filled with horizontal ruling lines. The right edge of the page is perforated, indicating it is designed to be torn out. The entire page is set against a dark background with a subtle dot pattern.

COMMERCIAL



BRINKS

A TRUSTED NAME IN SECURITY SINCE 1859™



© 2019 Hampton Products International Corp.
50 Icon, Foothill Ranch, CA 92610
1-800-562-5625
998-00129

84000-00014_REVE 01/19