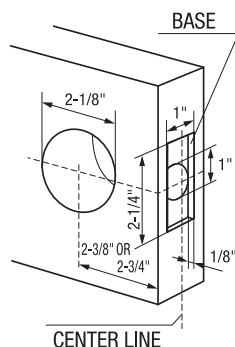


INSTALLATION INSTRUCTIONS FOR TUBULAR LEVERSET MODELS: UH40013, UH40014 & UH40015.

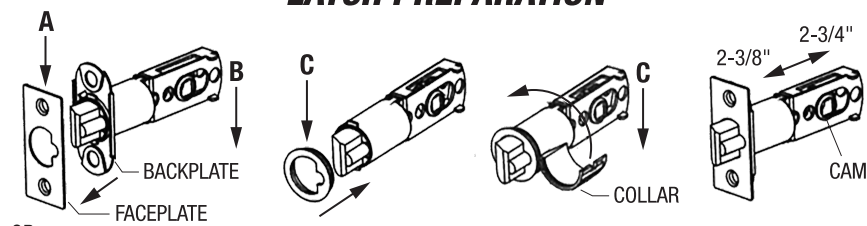
• Fits Doors 1-3/8" to 2" Thick • Backset 2-3/8" or 2-3/4"

NEW DOOR PREPARATION

- A:** Fold template on edge of door and mark hole for 2-3/8" or 2-3/4" backset.
- B:** Drill 2-1/8" hole through door (from both sides to avoid damaging door).
- C:** Drill a 1" hole in edge of door.



LATCH PREPARATION



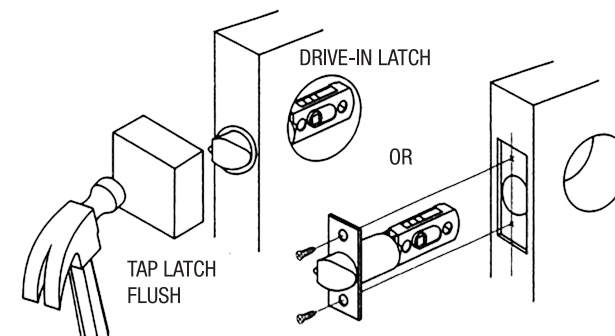
IF NEEDED, CHANGE LATCH FACEPLATE

- A:** Separate faceplate from backplate as shown.
- B: FOR DRIVE-IN LATCH:** Rotate backplate and slide off latch.
- C:** Snap on drive-in faceplate and secure with collar.

INSTRUCTION FOR ADJUSTABLE LATCH

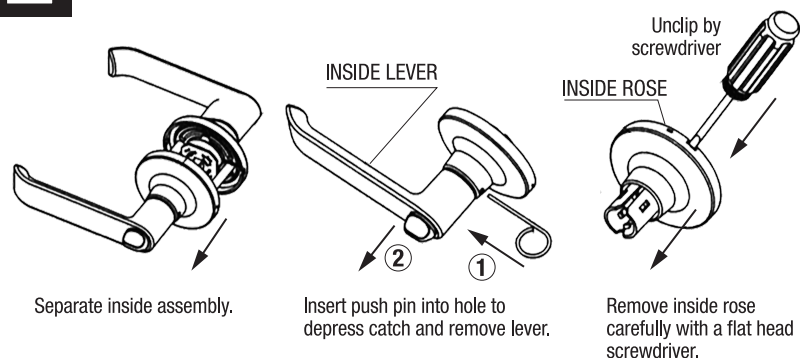
This latch comes pre-set for a 2-3/8" backset. To change the latch for a 2-3/4" backset push the cam toward the end of the latch.

INSTALL LATCH



Install as shown for appropriate latch type. Ensure bevel faces door jamb.

1 DISASSEMBLE INSIDE LEVER & INSIDE ROSE

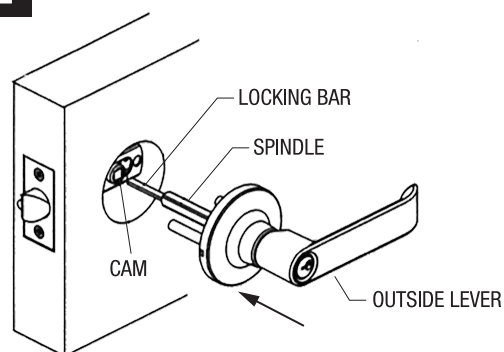


Separate inside assembly.

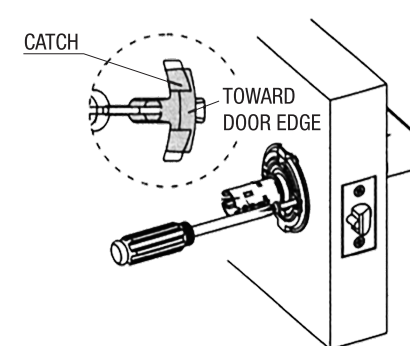
Insert push pin into hole to depress catch and remove lever.

Remove inside rose carefully with a flat head screwdriver.

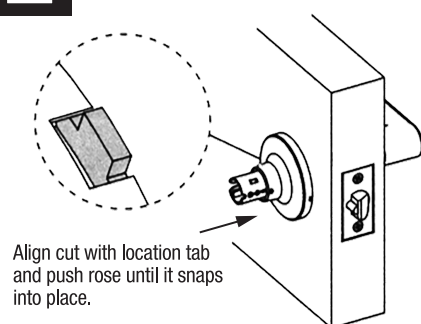
2 INSTALL OUTSIDE LEVER



3 INSTALL MOUNTING PLATE



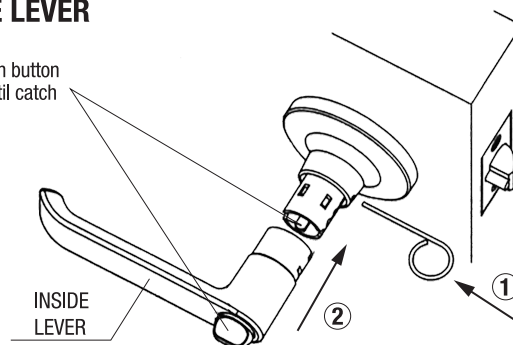
4 INSTALL INSIDE ROSE



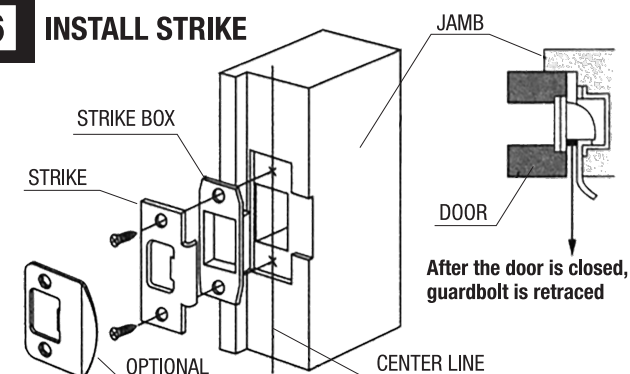
Align cut with location tab and push rose until it snaps into place.

5 INSTALL INSIDE LEVER

Keep locking bar and turn button horizontal. Push lever until catch snaps into place.



6 INSTALL STRIKE



After the door is closed, guardbolt is retracted